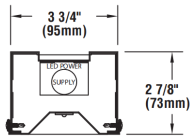
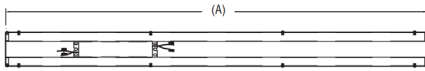


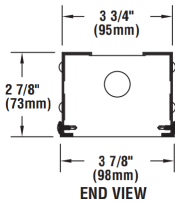
SLE SERIES LED SOFFIT STRIP



DIMENSIONS



CROSS SECTION



END VIEW

| Description | Dim "A" |
|----------------------|---------------|
| 4 ft. Soffit Housing | 48" / 1220 mm |
| 6 ft. Soffit Housing | 72" / 1829 mm |
| 8 ft. Soffit Housing | 96" / 2439 mm |

Dimensions above are for determining overall length of individual sections. Specify total linear run length per individual straight run to insure proper power supply requirements. Standard maximum length of a single unit is 8 feet. All other specified lengths are combinations of 8 feet and below.



Made in the U.S.A. of the U.S. and imported parts.
Meets Buy American requirements for ARRA.

SPECIFICATIONS

APPLICATION

A complete continuous row building series of high performance, energy efficient LED illumination in an easy to install format. Designed for applications for storefront walkways and sidewalks.

LEDS

Select High-brightness LEDs. Available in 4100K (NW) and 5000K (CW). 70 CRI (nominal).

OPTICS

High efficiency, die formed, one piece reflectors provide a smooth and brilliant Symmetrical distribution.

LIGHT OUTPUT

Input power is 2.64 watts per foot. Cool White (CW) lumens per foot are 215. Neutral White (NW) lumens per foot are 180.

HOUSING

Die formed, non-corrosive aluminum, painted with several powder coat finish options.

POWER SUPPLY

60w, 120-277V 50/60Hz. IP67 rated for use in wet, damp and dry locations.

OPERATING TEMPERATURE

-35°C to +60°C (-31°F to +140°F)

INSTALLATION

Installs in continuous row or staggered applications designed to span entire soffit lengths.

EXPECTED LIFE

Projected life of 50,000 hours minimum.

WARRANTY

Limited 5-year warranty.

LISTING

ETL compliant to U.S. and Canadian safety standards. Suitable for wet locations.

PHOTOMETRICS

Application layouts are available upon request.

Project Name: _____

Date: _____

Location: _____

Notes: _____

SLE SERIES LED SOFFIT STRIP

ORDERING INFORMATION SELECT APPROPRIATE CHOICE FROM EACH COLUMN TO FORMULATE ORDER CODE.

Refer to example below.

| SERIES | TOTAL LINEAR LENGTH REQUIRED (FT.) ¹ | LIGHT SOURCE | LED COLOR | INPUT VOLTAGE |
|------------|---|---------------------------------|---|--|
| SLE | 4 4ft 6 6ft 8 8ft | LED Light Emitting Diode | CW Cool White NW Neutral White | UE Universal Input Voltage (120-277V) |

ORDER:

| | | | | |
|----------------|--|------------|--|--|
| WLS-SLE | | LED | | |
|----------------|--|------------|--|--|

Example: WLS-SLE-6-LED-NW-UE

FOOTNOTES:

1- Standard maximum length of a single unit is 8 feet. All other specified lengths are combinations of 8 feet and below.



1919 Windsor Place
Fort Worth, TX 76110
800.622.8711

www.wslighting.com

Project Name: _____

Date: _____

Location: _____

Notes: _____

01 REV. 12/17

Specifications subject to change without notice.